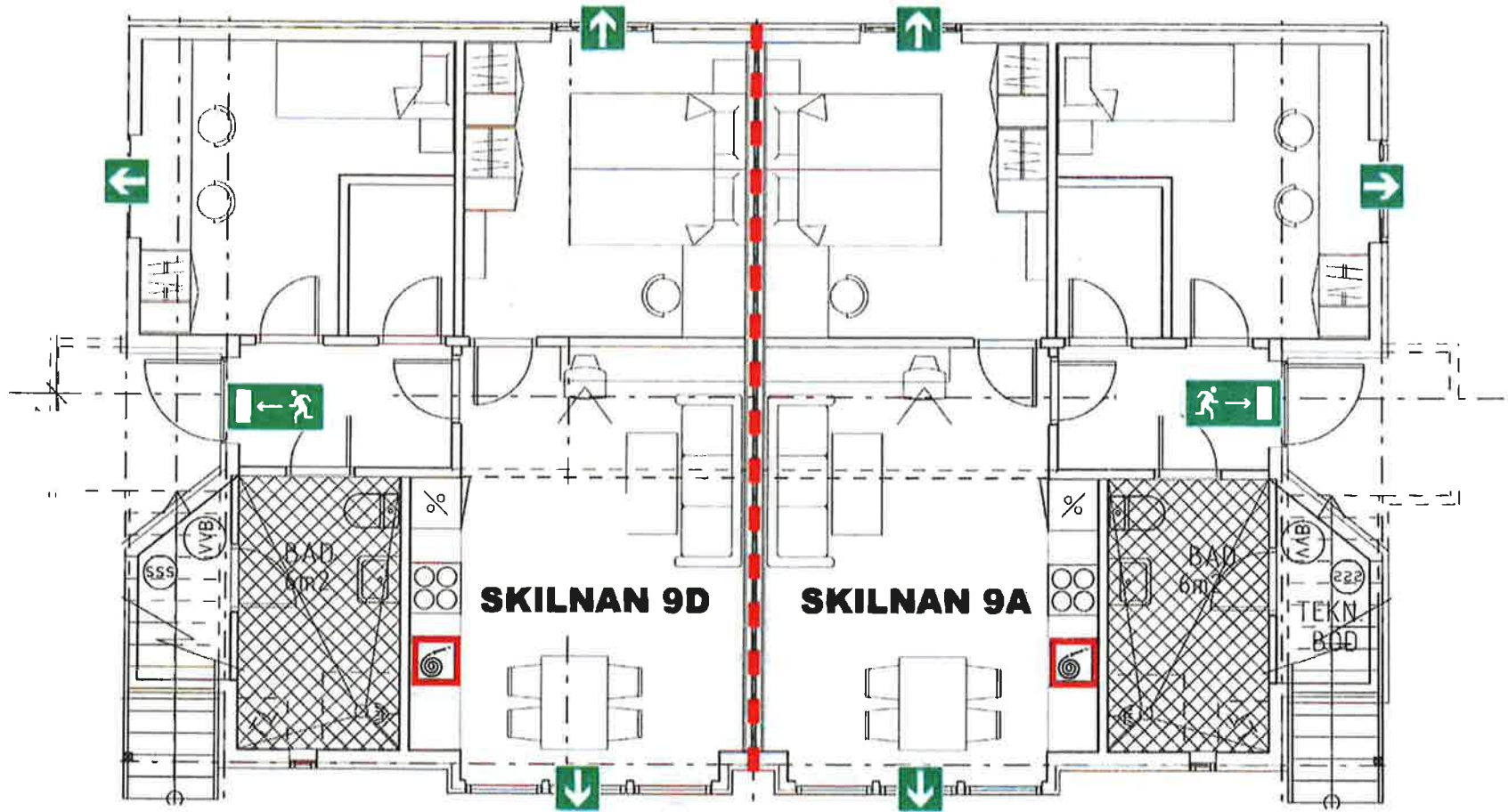


Skilnan 1. etg (Ground floor)

- Branncellebegrensende bygningsdel(E30)
- Rømningsutgang/Escape route
- Rømningsvindu/Escape route
- Brannslange/Fire hose



Skilnan 2. etasje(1st floor)

- Branncellebegrensende bygningsdel(E30)
- ➔ Rømningsvindu/Escape route
- 🎯 Brannslange/Fire hose
- ➔ Alt. rømningsvei/Alt. escape route

